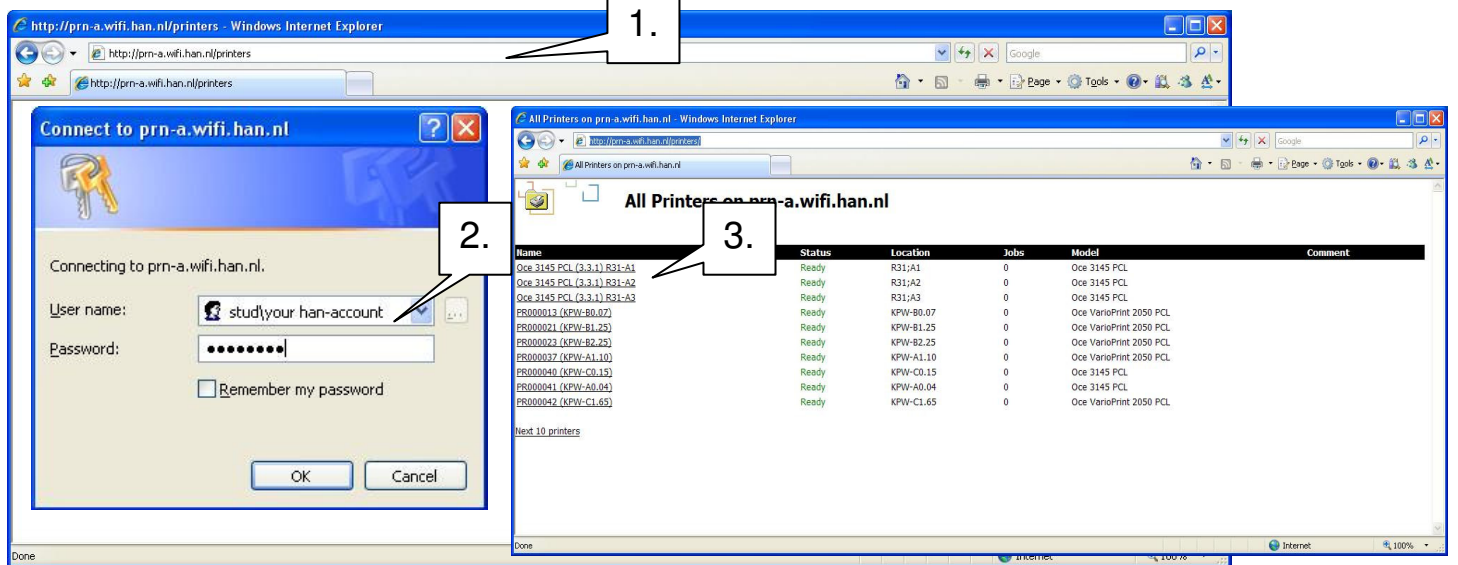


## HAN Wireless printer facilities for Microsoft Windows XP.

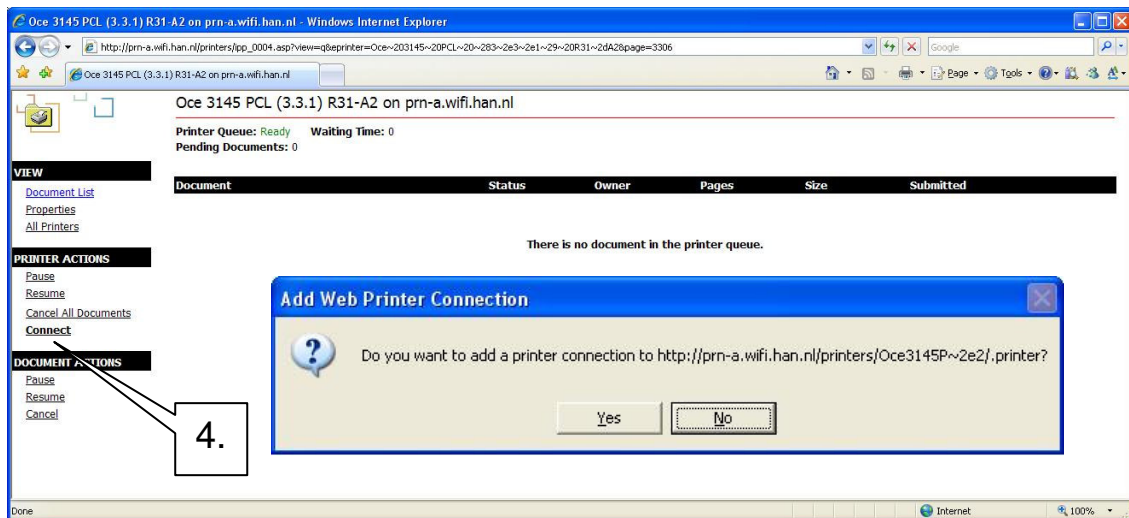
- Required:
- Administrator rights i.e. member of the Administrators group.
  - Have your (wireless) network up and running.

1. Start your browser (IE) goto site: <http://prn-a.wifi.han.nl/printers>

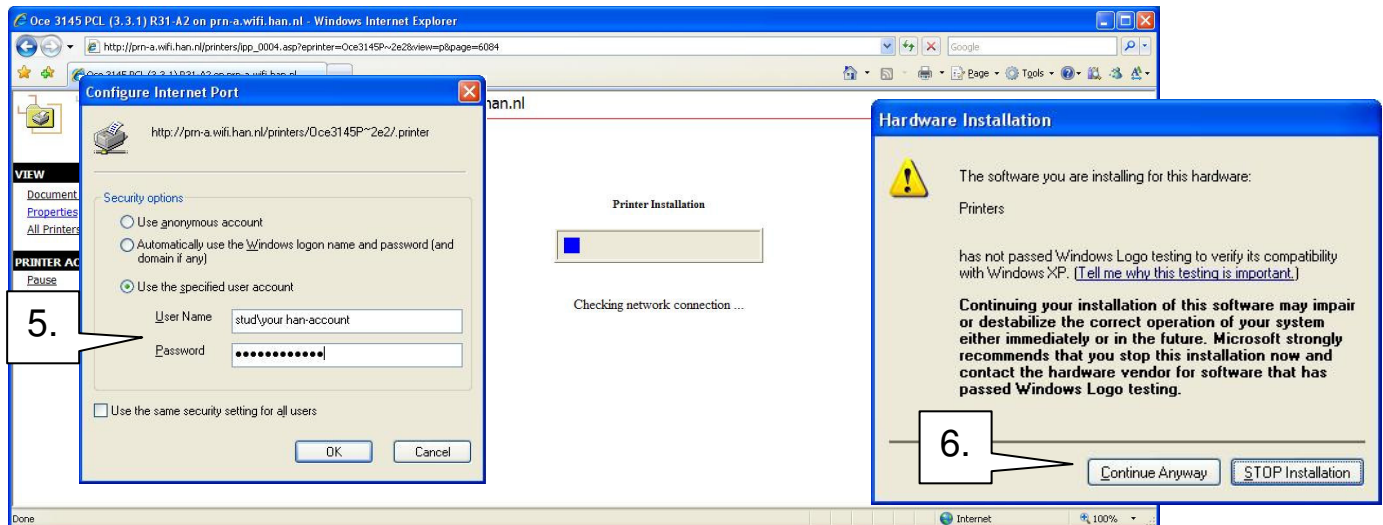


Login with your STUD\han-account (a.k.a. handcode)

3. Select your preferred printer ( check location printer ).



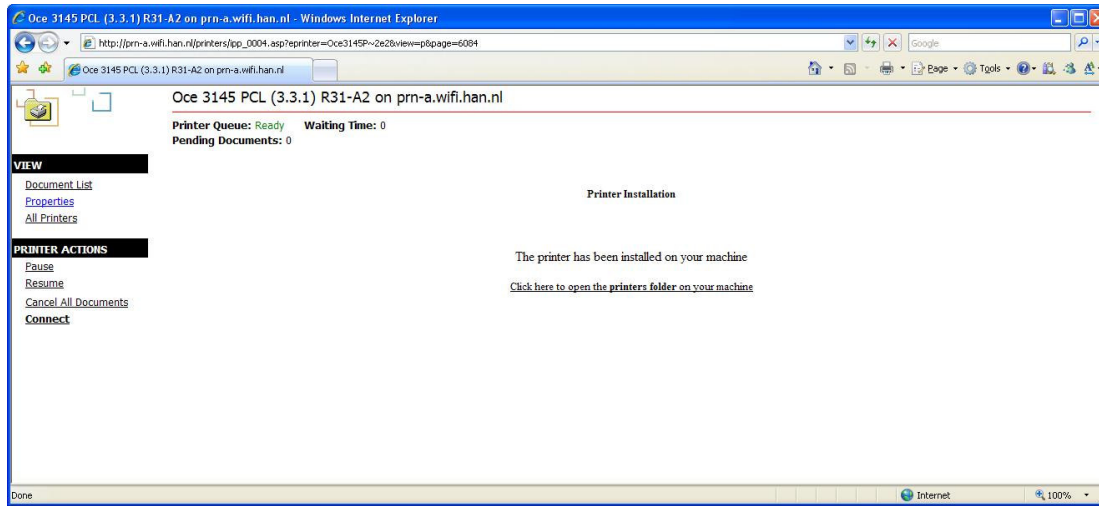
4. Click on **Connect**. There is a pop up confirmation window. Click 'Yes'.



5. In next window select 'Use the specified account'. Fill in User Name: STUD\han-account and your password.

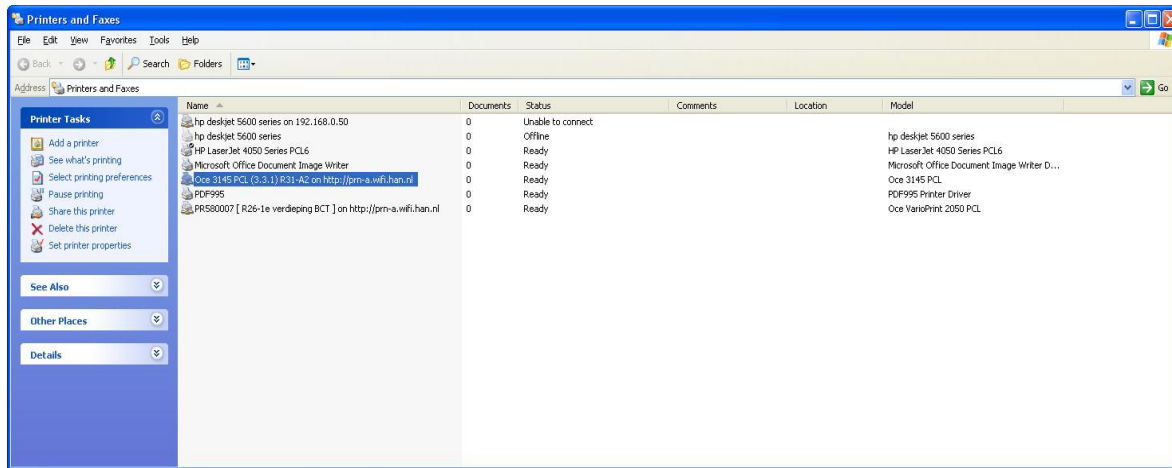
6. Next a new warning box Hardware Installation: Click 'Continue Anyway'.

7. Just wait... next you see the following screen in your browser: Printer installation is done. Enjoy.

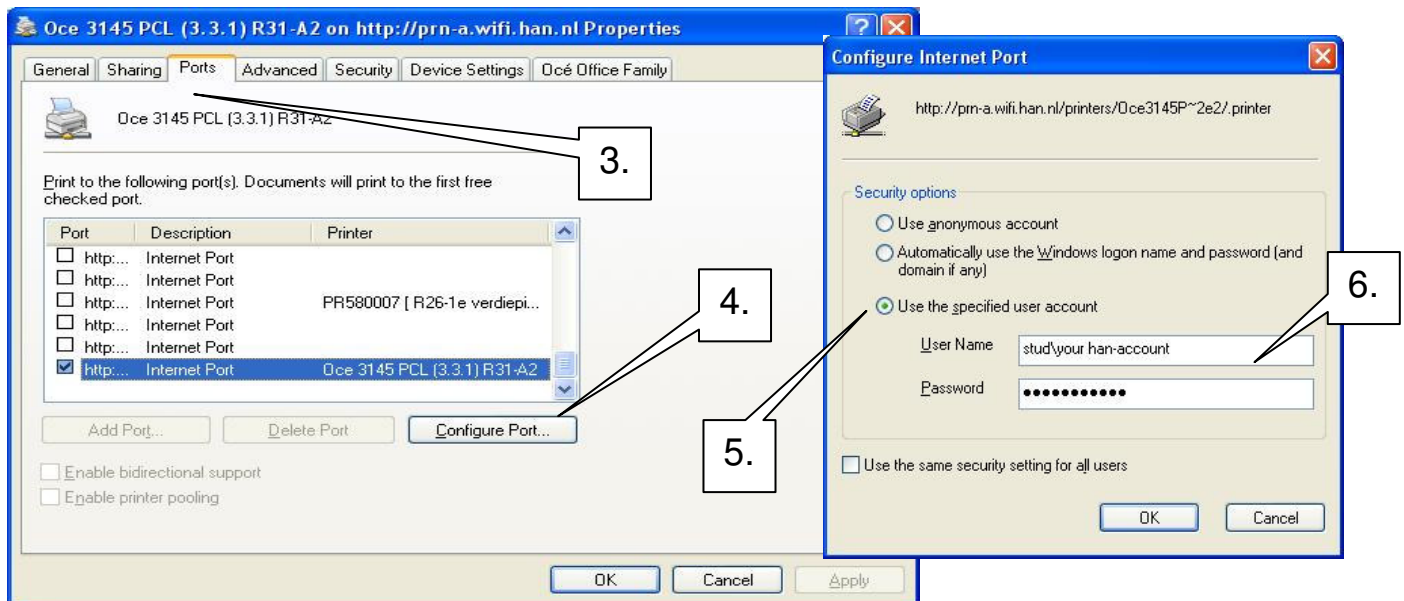


You have not Administrator privileges on your system: (and printer is already installed)

1. Start button → Printers or Control Panel → Hardware and Sound → Printers



2. Select a printer and right-click then select 'Properties'.



3. Select tab - 'Ports'
4. Click button 'Configure Port...'
5. Select 'Use the specified user account'.
6. Fill in for User Name: STUD\han-account. Password: your password.