

How to set up Path to .exe GNUWin32 binary files in Windows XP / Vista / 2003 / 2008 (Setting PATH to executables on Windows)

Author : admin

I've been working on a servers running **Windows 2003** and **Windows 2008** these days.

As I wanted to be more flexible on what I can do from the command line I decided to install **GNUwin** (provides port of GNU tools), most of which are common part of any Linux distribution).

Having most of the command line flexibility on a Windows server is a great thing, so I would strongly recommend GNUWin to any Windows server administrators out there.

Actually it's a wonderful thing that most of the popular Linux tools can easily be installed and used on Windows for more [check GnuWin32 on sourceforge](#)

One of the reasons I installed Gnuwin was my intention to use the good old Linux **tail** command to keep an eye interactive on the IIS server access log files, which by the way for IIS webserver are stored by default in **C:\Windows\System32\LogFiles\W3SVC1*.log**

I've managed to install the **GNUWin** following the install instructions, not with too much difficulties. The install takes a bit of time, cause many packs containing different parts of the GNUWin has to be fetched.

To install I downloaded the GNUWin installer available from GNUWin32's website and instructed to extracted the files into **C:\Program Files\Gnuwin**

Then I followed the install instructions suggestions, e.g.:

```
C:\> cd c:\Program Files\GnuWin
C:\Program Files\GnuWin> download.bat
...
C:\Program Files\GnuWin> install c:\gnuwin32
...
```

After the installation was successfully completed on the two Windows machines, both of which by the way are running 64 bit Windows, it was necessary to add the newly installed GNU .exe files to my regular cmd.exe **PATH** variable in order to be able to access the **sed**, **tail** and the rest of the gnuwin32 command line tools.

In order to add **C:\GnuWin32\bin** directory to the windows defined Command line **Path**, I had to do the following:

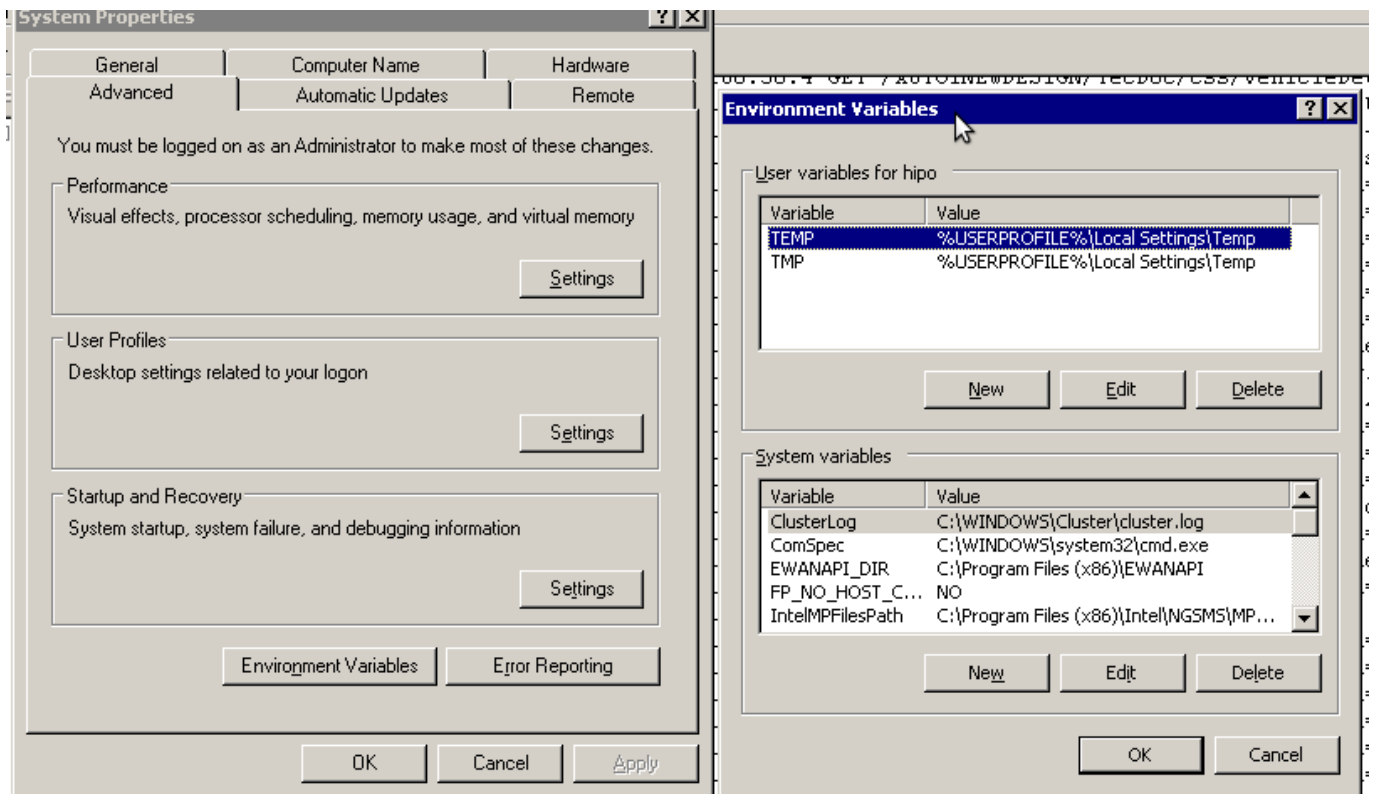
a. Select (Properties) for My Computer

Start (button) -> My Computer (choose properties)

b. Select the My Computer Advanced (tab)

Then, from the My Computer pane press on **Advanced tab**

c. Next press on Environment Variables



You see in above's screenshot the **Environment Variables** config dialog, to add the new path location in **System Variables** section, between the list I had to add the *c:\GNUwin32\bin* path location. To find I pressed on *Edit* button scrolled down to find the Variable and hence added at the end of the long list defined paths.

After adding in GNUwin, the Windows path looks like this:

C:\Program Files (x86)\EWANAPI;C:\WINDOWS\system32;C:\WINDOWS;C:\WINDOWS\System32\Wbem;C:\Program Files (x86)\Intel\NGSMS\MPFiles;C:\Program Files (x86)\Microsoft SQL Server\100\Tools\Binn\;C:\Program Files\Microsoft SQL Server\100\Tools\Binn\;C:\Program Files\Microsoft SQL Server\100\DTS\Binn\;C:\Program Files (x86)\Microsoft SQL Server\100\Tools\Binn\VSShell\Common7\IDE\;C:\Program Files (x86)\Microsoft Visual Studio 9.0\Common7\IDE\PrivateAssemblies\;C:\Program Files (x86)\Microsoft SQL Server\100\DTS\Binn\;C:\WINDOWS\system32\WindowsPowerShell\v1.0;C:\gnuwin32\bin

Further on, I launched the **tail** command to intercatively take an eye on who is accessing the IIS webserver.

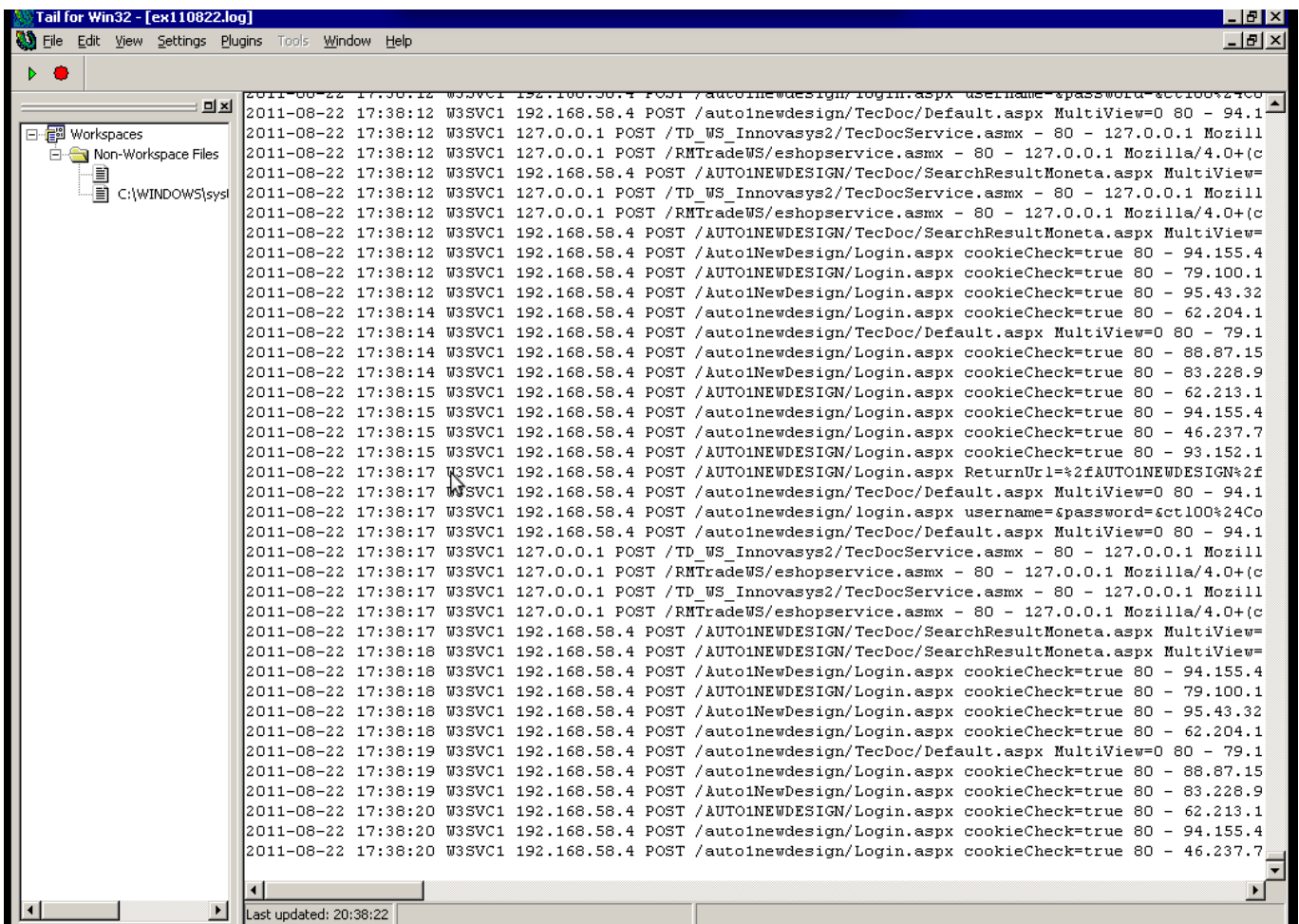
Sadly this worked not, trying to use tail with the IIS **ex10116.log** log:

```
C:\Windows\System32\Logfiles\W3SVC1> tail -f ex10116.log
```

Spit an error **tail: ex10116.log: Bad file descriptor**

Since I couldn't use **tail -f** I looked for alternative and a quick search led me to **Tail 4 Win32** . Lest the name suggests it is supposed to work on 32 bit arch Windows the version on [tailforwin32's website](#) is working perfectly fine on 64 bit Windows as well.

What it does is to simulate a normal **tail -f** command inside a very simplistic window interface. You see it in action with opened IIS log on below's screenshot:



The screenshot shows a window titled "Tail for Win32 - [ex110822.log]". The window has a menu bar with "File", "Edit", "View", "Settings", "Plugins", "Tools", "Window", and "Help". On the left, there is a sidebar with "Workspaces" and "Non-Workspace Files", showing a file named "C:\WINDOWS\system32\Logfiles\W3SVC1\ex110822.log". The main area displays a list of log entries in a monospaced font, showing timestamps, IP addresses, and HTTP requests. The entries are as follows:

```
2011-08-22 17:38:12 W3SVC1 192.168.58.4 POST /auto1newdesign/login.aspx username=&password=6ct100%24Co
2011-08-22 17:38:12 W3SVC1 127.0.0.1 POST /TD_WS_Innovasys2/TecDocService.aspx - 80 - 127.0.0.1 Mozill
2011-08-22 17:38:12 W3SVC1 127.0.0.1 POST /RMTradeWS/eshopservice.aspx - 80 - 127.0.0.1 Mozilla/4.0+(c
2011-08-22 17:38:12 W3SVC1 192.168.58.4 POST /AUTO1NEWDESIGN/TecDoc/SearchResultMoneta.aspx MultiView=
2011-08-22 17:38:12 W3SVC1 127.0.0.1 POST /TD_WS_Innovasys2/TecDocService.aspx - 80 - 127.0.0.1 Mozill
2011-08-22 17:38:12 W3SVC1 127.0.0.1 POST /RMTradeWS/eshopservice.aspx - 80 - 127.0.0.1 Mozilla/4.0+(c
2011-08-22 17:38:12 W3SVC1 192.168.58.4 POST /AUTO1NEWDESIGN/TecDoc/SearchResultMoneta.aspx MultiView=
2011-08-22 17:38:12 W3SVC1 192.168.58.4 POST /Auto1NewDesign/Login.aspx cookieCheck=true 80 - 94.155.4
2011-08-22 17:38:12 W3SVC1 192.168.58.4 POST /AUTO1NEWDESIGN/Login.aspx cookieCheck=true 80 - 79.100.1
2011-08-22 17:38:12 W3SVC1 192.168.58.4 POST /Auto1NewDesign/Login.aspx cookieCheck=true 80 - 95.43.32
2011-08-22 17:38:14 W3SVC1 192.168.58.4 POST /auto1newdesign/Login.aspx cookieCheck=true 80 - 62.204.1
2011-08-22 17:38:14 W3SVC1 192.168.58.4 POST /auto1newdesign/TecDoc/Default.aspx MultiView=0 80 - 79.1
2011-08-22 17:38:14 W3SVC1 192.168.58.4 POST /auto1newdesign/Login.aspx cookieCheck=true 80 - 88.87.15
2011-08-22 17:38:14 W3SVC1 192.168.58.4 POST /Auto1NewDesign/Login.aspx cookieCheck=true 80 - 83.228.9
2011-08-22 17:38:15 W3SVC1 192.168.58.4 POST /AUTO1NEWDESIGN/Login.aspx cookieCheck=true 80 - 62.213.1
2011-08-22 17:38:15 W3SVC1 192.168.58.4 POST /auto1newdesign/Login.aspx cookieCheck=true 80 - 94.155.4
2011-08-22 17:38:15 W3SVC1 192.168.58.4 POST /auto1newdesign/Login.aspx cookieCheck=true 80 - 46.237.7
2011-08-22 17:38:15 W3SVC1 192.168.58.4 POST /AUTO1NEWDESIGN/Login.aspx cookieCheck=true 80 - 93.152.1
2011-08-22 17:38:17 W3SVC1 192.168.58.4 POST /AUTO1NEWDESIGN/Login.aspx ReturnUrl=%2fAUTO1NEWDESIGN%2f
2011-08-22 17:38:17 W3SVC1 192.168.58.4 POST /auto1newdesign/TecDoc/Default.aspx MultiView=0 80 - 94.1
2011-08-22 17:38:17 W3SVC1 192.168.58.4 POST /auto1newdesign/login.aspx username=&password=6ct100%24Co
2011-08-22 17:38:17 W3SVC1 192.168.58.4 POST /auto1newdesign/TecDoc/Default.aspx MultiView=0 80 - 94.1
2011-08-22 17:38:17 W3SVC1 127.0.0.1 POST /TD_WS_Innovasys2/TecDocService.aspx - 80 - 127.0.0.1 Mozill
2011-08-22 17:38:17 W3SVC1 127.0.0.1 POST /RMTradeWS/eshopservice.aspx - 80 - 127.0.0.1 Mozilla/4.0+(c
2011-08-22 17:38:17 W3SVC1 127.0.0.1 POST /TD_WS_Innovasys2/TecDocService.aspx - 80 - 127.0.0.1 Mozill
2011-08-22 17:38:17 W3SVC1 127.0.0.1 POST /RMTradeWS/eshopservice.aspx - 80 - 127.0.0.1 Mozilla/4.0+(c
2011-08-22 17:38:17 W3SVC1 192.168.58.4 POST /AUTO1NEWDESIGN/TecDoc/SearchResultMoneta.aspx MultiView=
2011-08-22 17:38:18 W3SVC1 192.168.58.4 POST /AUTO1NEWDESIGN/TecDoc/SearchResultMoneta.aspx MultiView=
2011-08-22 17:38:18 W3SVC1 192.168.58.4 POST /Auto1NewDesign/Login.aspx cookieCheck=true 80 - 94.155.4
2011-08-22 17:38:18 W3SVC1 192.168.58.4 POST /AUTO1NEWDESIGN/Login.aspx cookieCheck=true 80 - 79.100.1
2011-08-22 17:38:18 W3SVC1 192.168.58.4 POST /Auto1NewDesign/Login.aspx cookieCheck=true 80 - 95.43.32
2011-08-22 17:38:18 W3SVC1 192.168.58.4 POST /auto1newdesign/Login.aspx cookieCheck=true 80 - 62.204.1
2011-08-22 17:38:19 W3SVC1 192.168.58.4 POST /auto1newdesign/TecDoc/Default.aspx MultiView=0 80 - 79.1
2011-08-22 17:38:19 W3SVC1 192.168.58.4 POST /auto1newdesign/Login.aspx cookieCheck=true 80 - 88.87.15
2011-08-22 17:38:19 W3SVC1 192.168.58.4 POST /Auto1NewDesign/Login.aspx cookieCheck=true 80 - 83.228.9
2011-08-22 17:38:20 W3SVC1 192.168.58.4 POST /AUTO1NEWDESIGN/Login.aspx cookieCheck=true 80 - 62.213.1
2011-08-22 17:38:20 W3SVC1 192.168.58.4 POST /auto1newdesign/Login.aspx cookieCheck=true 80 - 94.155.4
2011-08-22 17:38:20 W3SVC1 192.168.58.4 POST /auto1newdesign/Login.aspx cookieCheck=true 80 - 46.237.7
```

At the bottom, it says "Last updated: 20:38:22".

Finally my goal is achieved and I can take an eye interactively on IIS logs. End of the article, hope it wasn't too boring ;)