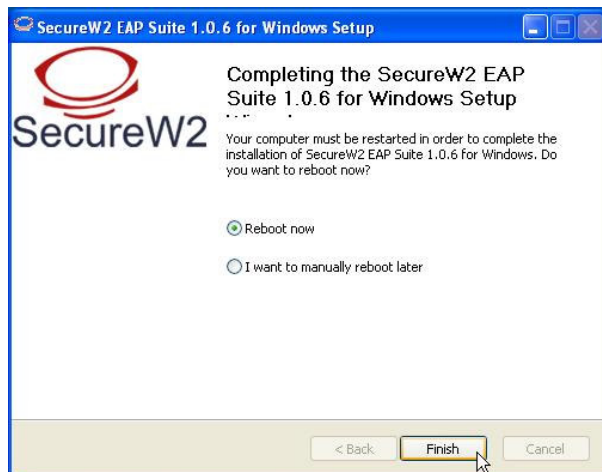


Requirements: Microsoft Windows XP and user-id HANaccount.

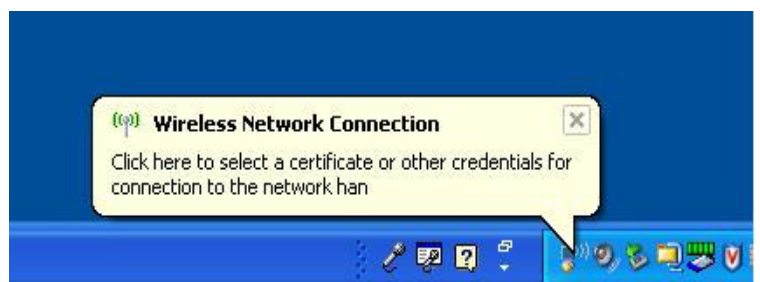
You will find the software (and this documentation) on www.han.nl/insite/english. From here choose 'Service' → 'Facilities/Manuals' → 'HANWireless' → 'Manuals and software wireless networking and printing'

The installation is straightforward: Click on '**SecureW2_EAP_Suite_HAN**'. In the 'File Download' box click 'run'. Follow next instructions steps. After installation system has to reboot!

1. Select your preferred language. 'English', 'Nederlands' or Then click OK.
2. Welcome message Information. Click "Next".
3. License Agreement. Click on "I Agree".
4. Components to install. TTLS 4.0.0 (is default). Just click on "Install".



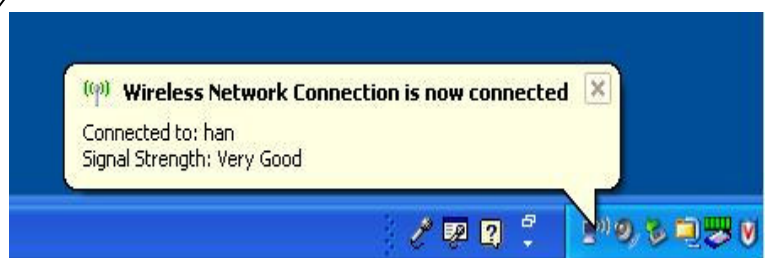
5. Click "Finish". System reboots and SecureW2 is installed.(wait a few seconds).



6. After reboot you see in lower-right corner a popup. Click on this popup.



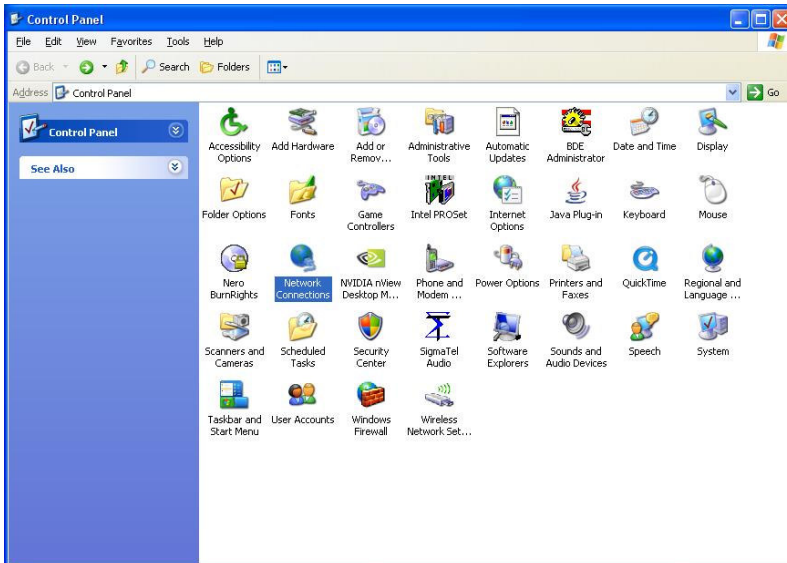
7. Fill in your HANaccount and password.
8. Don't forget to check option 'Save user credentials'.



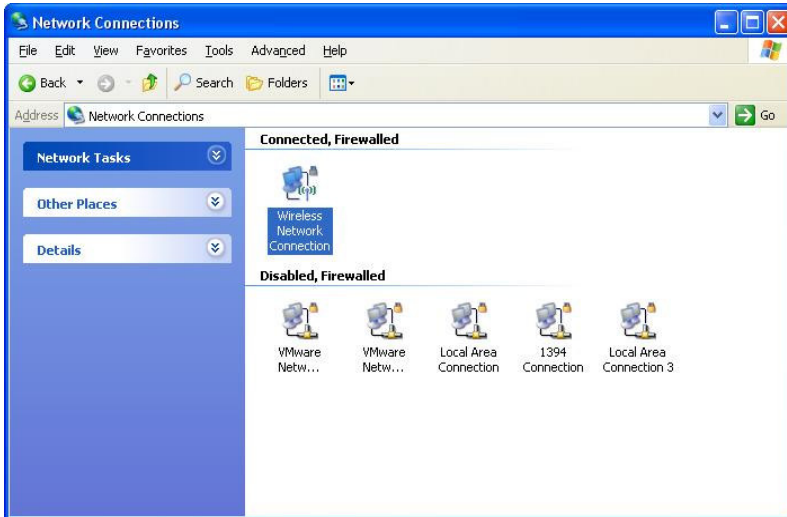
9. Installation done. After a moment the connection is ready for use. Enjoy

Next part is only for Problem solving:

Check your HANaccount, password and configuration. Perform a check for all settings in windows.



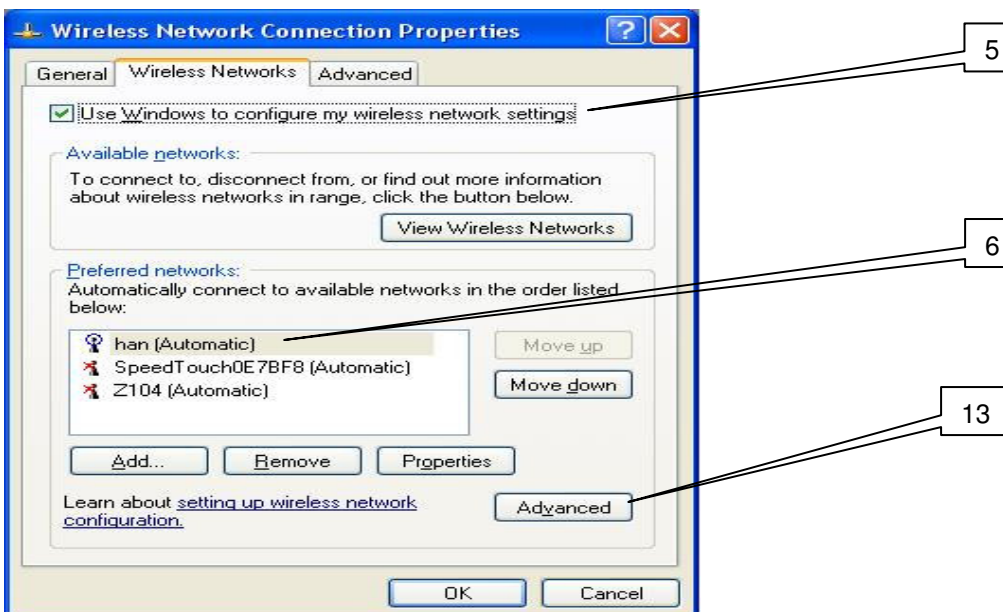
1. Start → Control Panel → Network Connections



2. → right-click the 'Wireless Network Connection'.

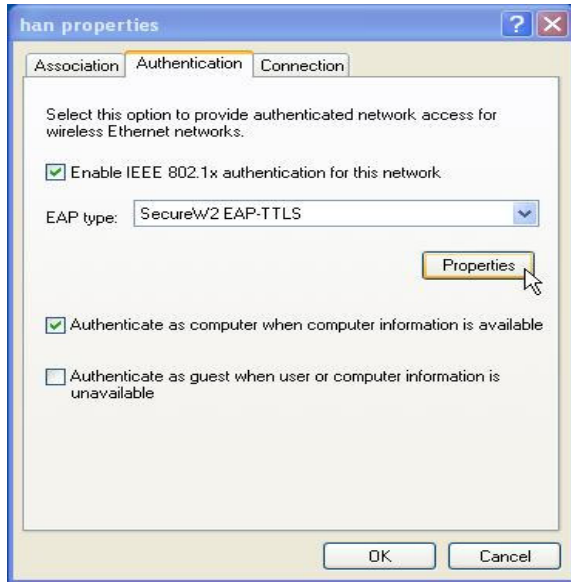
3. → Choose Properties.

4. → Select -tab- Wireless Networks.



5. Don't forget to check the tick 'Use Windows to configure my wireless....'

6. Select 'han' → then choose 'Properties'.



7. select -tab Authentication → 'Properties' of SecureW2

8. Choose Configure 'HAN Wireless Connection'

9. Check all 4 tabs.

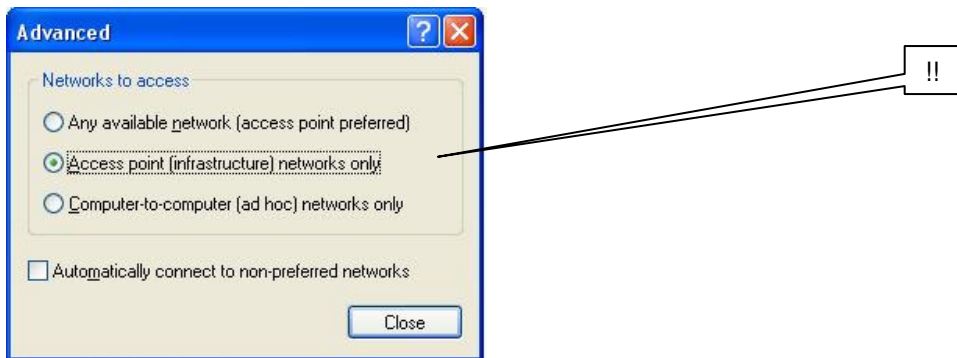


Method: PAP

10. Fill in your HANaccount and password.
Un-tick 'Prompt user for credentials'
11. Advanced button



12. Close all of secureW2 configuration: Click OK→OK→OK.



13. See screen 5. for reference: click button 'Advanced'
→ Select option 'Access point (infrastructure) networks only'.
De-select all other options. (These settings are essential for a flawless connection !)

Optional Information:

If you change your password don't forget to change it here also!! Start with first step Problem solving.

After a few seconds the wireless connection will be established. If all fails see your local helpdesk.

Uninstall additional software that came with your wireless network card. Only install the wireless network drivers.

Some wireless network-cards have a power saving feature. This may cause wireless connection problems. To prevent this you can modify this behavior. See your documentation and set the wireless network card to maximum performance.

Use a recent Virus scanner and firewall.